



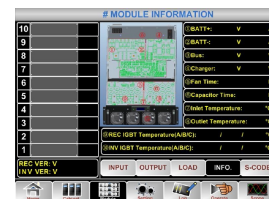
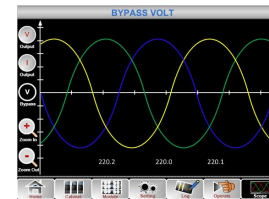
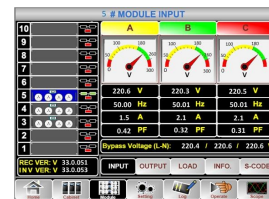
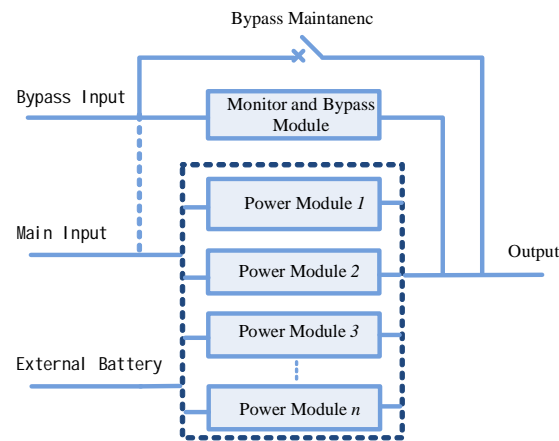
RM300/30X Series Modular Online UPS

25-900KVA (380V/400V/415V)

15-600KVA (200V/208V/220V)

Description

The RM300/30X Modular UPS provides the most compact footprint of less than 2 m² with maximum capacity of 900KVA . With best reliability and high performance, it has been leading the domestic market for years. RM300/30X is considered to be the best power protection solution for large data centers, as well as for sensitive electronics.



Features

- Modular design with N+X redundancy ,online hot-swappable
- High power density with footprints of less than 2 m² up to 900KVA in parallel, 30KVA power module with height of only 3U
- Green and energy saving: AC/AC efficiency>95%,input power factor>0.99 while input THDi<3%
- Full DSP control of high stability, reliability and safety
- Integrated IGBT module with improved performance and reduced size
- Excellent input performances for complete compatibility with input PF of 99% and wide range of voltage
- Self-Aging mode for full load test with less than 10% of the total power capacity needed
- Smart Sleeping mode for energy saving and prolong the life time of the system
- Optimized battery management, intelligently control the whole process of the charging and discharging, effectively improve the life time of the battery
- Battery cold start, starting up without main input
- Automatically record the critical wave information when fault happen, easy for trouble shooting
- Monitor runtime of critical components, such as fans and capacitors, settable alarm for service period
- Independent LCD display for each power module with self-starting function
- Programmable dry contacts, the function of each port can be defined by users
- Friendly human machine interface with colorful touch screen of 10.4 inches

Specification

MODEL	RM300/30X RM250/25X	RM180/30X RM150/25X	RML200/20X RML150/15X	RML120/20X RML90/15X	
Capacity	25-900KVA		15-600KVA		
Power Module Type	PM30X/PM25X		PML20X/PML15X		
INPUT					
Phase	3 Phases + Neutral + Ground				
Voltage	380V/400V/415V(line to line)		200V/208V/220V(line to line)		
Frequency	50/60Hz				
Power Factor	>0.99				
THDi	THDi<3% @ 100% linear load				
Voltage Range	304~478Vac (Line-Line),full load 228V~304Vac (Line-Line),load decrease linearly according to the min phase voltage		166~261Vac (Line-Line),full load 125V~166Vac (Line-Line),load decrease linearly according to the min phase voltage		
Frequency Range	40Hz~70Hz				
OUTPUT					
Voltage	380V/400V/415V		200V/208V/220V		
Voltage Regulation	1.5%				
THDu	THD<1%(linear load),THD<6%(None linear load)				
Power Factor	0.9		0.8		
Crest Factor	3:1				
Overload Capability	110% for 1 hour; 125% for 10 minutes ;150% for 1 minute; >150% for 200ms				
BATTERY					
Voltage	±240VDC		±120VDC		
Charge Power	20%*System Power				
Charge Power Precision	±1%				
SYSTEM					
System Efficiency	Normal mode:95% ;ECO mode:99% ; Battery mode:95%		Normal mode:93% ;ECO mode:98% ; Battery mode:93%		
Display	10.4" LCD+LED, Color touch Screen +Keyboard				
IP Class	IP20				
Interface	Standard :RS232,RS485,Dry contacts, USB; Optional: SNMP ,Expansion dry contact card				
Operation/Storage Temperature	0~40℃/-40~70℃				
Relative Humidity	0~95%(non-condensing)				
Noise	65dB @ 100% load, 62dB @ 45% load(1 meter away)				
PHYSICAL					
Weight	Cabinet	10-Slot Cabinet:220Kg	6-Slot Cabinet :165Kg	10-Slot Cabinet:220Kg	6-Slot Cabinet :165Kg
	Power Module	PM30X:34Kg; PM25X: 32Kg		PML20X:34Kg; PML15X: 32Kg	
Dimension (W*D*H)	Cabinet	10-Slot Cabinet: 600*1100*2000(mm)	6-Slot Cabinet: 600*1100*1600(mm)	10-Slot Cabinet: 600*1100*2000(mm)	6-Slot Cabinet: 600*1100*1600(mm)
	Power Module	PM30X/ PM25X:460*790*134(mm)		PML20X/PML15X:460*790*134(mm)	